



P2[®]

P2 Security 3.2

Web UI User's Guide

P2 SECURITY

Web UI User's Guide

Second Edition (August 2023)

This edition applies to Version 3.2 of P2 Security and to all subsequent releases and modifications until otherwise indicated in new editions.

© P2 Energy Solutions Pty Ltd 2021. All rights reserved.
Level 1, 1195 Hay Street, West Perth, WA, 6005, Australia
PO Box 305, West Perth, WA, 6005, Australia
Phone +61 8 9241 0300

Reference herein to P2ES Holdings, LLC shall also include any affiliates thereof (collectively, "P2").

Use of this product and accompanying documentation is subject to the terms and conditions set out in the P2ES Holdings, LLC standard Master Agreement terms and conditions. All information contained in these Release Notes is the confidential and proprietary property of P2ES Holdings, LLC.

The products of P2 are not a primary alarming, machine health, or asset protection system. This function must be performed by low level SCADA / Control Systems or machine monitoring equipment. P2 products are provided for advisory, informational, optimisation and diagnosis purposes.

This information may change without notice. The information and intellectual property contained herein remains the exclusive property of P2. If you find any problems in the documentation, please report them to us in writing. P2 does not warrant that this document is error-free.

Through product maintenance, P2 endeavours to keep its applications up to date with major platform version changes as these platform changes are adopted by our customers. Whilst we cannot test our products against every service pack and patch within a whole third party version release, we publish minimum required major version number, and offer support in the event that a minor patch released by a third party vendor causes an issue.

For licensing and compliance purposes, P2 may track usage of this product by capturing the following details: IP address, date/time, action (such as login, logout, timeout). No personal data such as user ID or passwords are tracked or recorded in this process.

P2 Production Operations and the P2 Production Operation logos are either registered trademarks or trademarks of P2 (and/or its affiliates) in Australia and/or other countries.

ActiveX, Active Directory, Authenticode, Bing, Excel, Internet Explorer, Microsoft, SharePoint, SQL Server, Visual Studio, Windows, and Windows Server are either registered trademarks or trademarks of Microsoft Corporation in the United States and/or other countries.

Other product and company names mentioned herein may be the trademarks of their respective owners.



Contents

Preface	1
Who Should Read This Guide	1
Related Documentation	1
Help and Support.....	2
Introduction	3
System Overview.....	3
Benefits	3
Features.....	4
P2 Security Web UI.....	4
P2 Security Plug-in.....	5
Overview of the Web UI	6
User Maintenance Page	6
Group Maintenance Page	7
Getting Started	8
Logging On to the Web UI	8
Changing Your Password	8
Common Tasks	9
Checking Web UI Version.....	9
Adding Users	9
Editing Users.....	10
Deleting Users.....	11
Copying Users	11
Assigning Users to User Groups.....	12
Logging Out	13



Preface

This guide provides users with information on how to use P2 Security Web UI.

P2 Security provides consistent user authorisation functionality for all the products, common components, and project-specific components developed by P2. Applications supporting P2 Security can verify users' privileges in order to allow or disallow performing specific actions on business data.

P2 Security Web UI, a default user administration interface, can be accessed remotely with a web-browser. It allows users with privileges to create and edit user accounts, and assign them to security groups of various applications.

This guide explains how such information is organized and how to use P2 Security Web UI to access it.

Who Should Read This Guide

This guide is intended for users who access P2 Security Web UI or any other application that supports P2 Security.

This guide assumes working knowledge of:

- Performing basic operations in a web browser.
- Basic P2 Security functionality.

Related Documentation

Documents in the P2 Security documentation suite are:

Title	Description
P2 Security Release Notes	Release notes for P2 Security.
P2 Security Web UI User's Guide	How to use P2 Security Web UI.
P2 Security Plug-in User's Guide	How to use P2 Security Plug-in for Enterprise Manager.
P2 Security Installation Guide	How to install and configure P2 Security Web UI and P2 Security Plug-in for Enterprise Manager.

These documents are available from P2 Customer Support.

Support

P2 Customer Support provides a central point of contact for software assistance and the resolution of software issues. As part of this, P2 offers a variety of professional services, online resources, and access to experienced product specialists who are able to assist with your service requests. For support and information regarding our products, the following resources are provided:

ONLINE SUPPORT PORTAL

The [P2 Customer Support Portal](#) provides access to online support, where you can raise service requests for P2 software, track defects, get product information, and communicate with P2 Customer Support.

CUSTOMER COMMUNITIES

P2's customer communities offer a networking environment for you and other P2 users. Our boards and user groups offer an informal setting to exchange information and discuss issues relevant to today's oil and gas companies. P2 is confident that together, we can create an interactive venue that will provide value by allowing our customers to communicate, collaborate and connect at multiple levels. For details, see www.p2energysolutions.com/services/customer-communities.

TRAINING

P2 offers a variety of standard and customised training courses (ranging from introductory courses through to administrator courses) to help you learn how to use P2 products.

CONTACT DETAILS

You can contact P2 Customer Support via phone or through the Customer Portal for technical support on any aspect of P2's products. Please also contact P2 Customer Support for further information on the Customer Communities, access to the online support portal, and information on available training courses.

Phone: 1300 739 969 (Australia only) or +61 8 9241 0314 (outside Australia)
USA: 1-844-REACHP2 (1-844-732-2472)

Support Portal <http://support.p2energysolutions.com>

Introduction

P2 Security is a common component that provides consistent user authorisation functionality for applications developed by P2.

The security mechanisms are provided to handle user authentication, verification of privileges of individual users and user groups, and to limit users' access to specific business areas or dialog windows within applications.

This chapter contains a description of what P2 Security does, and what its main features and benefits are. Detailed information about P2 Security Web UI, its user interface, and its navigation can also be found in later sections of this document.

System Overview

P2 Security provides consistent user authorisation functionality for applications developed by P2. Other applications can use P2 Security to authenticate users, and to check their privileges against centralised or distributed databases. Privileges can be granted to individual users or to user groups. The applications can also use P2 Security to limit users' access to particular business areas or dialog windows. Privileges can also be used to control which actions users can perform on specific business objects or visual controls.

P2 Security consists of the following parts:

Database instances (SQL Server or Oracle)

Store information about applications, object groups, object types, objects, privileges, and their associations. Databases also store the definitions of user groups, users, and their membership.

Web UI (user interface)

A web application that provides users with the functionality to perform high-level management of user accounts and their membership in user groups.

Plug-in (user interface)

A plug-in interface for Enterprise Manager that provides users with the functionality to perform low-level management of application definitions, security objects, user groups' privileges, and also user accounts and their membership in user groups.

API (application programming interface)

A set of common libraries, which are referenced and delivered as components of the P2 applications.

Dependent applications

These provide authentication functionality, and verify users' access based on the privileges defined in an SQL Server or Oracle database instance using P2 Security API. Users can control the security settings using P2 Security Web UI or P2 Security Plug-in.

Benefits

P2 Security provides authentication functionality to applications developed by P2. It offers the following benefits:



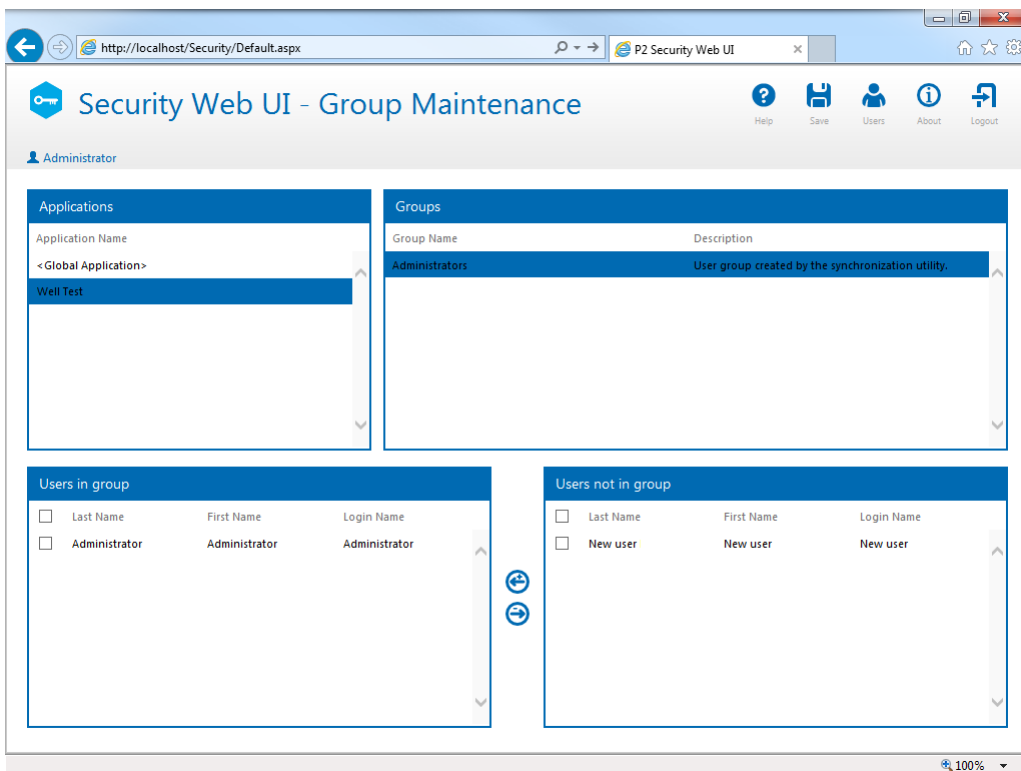
- Separate front-end applications for administrators (P2 Security Plug-in) and super-users (P2 Security Web UI) lets these users focus on the level of control they have been authorised to perform. Administrators have full control over all the security objects, whereas super-users can focus on basic user account management and assigning group membership.
- Password Authentication can be used in the systems that require dedicated security mechanisms, while Domain Authentication lets a user log in to the application without explicitly providing a user name and password.
- With a centralised P2 Security database instance, the configuration of privileges for various applications can be performed from a single user interface.

Features

This section describes the features offered by P2 Security Web UI and P2 Security Plug-in.

P2 Security Web UI

For basic management of user accounts and group membership, the component comes with P2 Security Web UI. This web application allows users to create, edit and delete user accounts, as well as to include or exclude them from existing user groups.



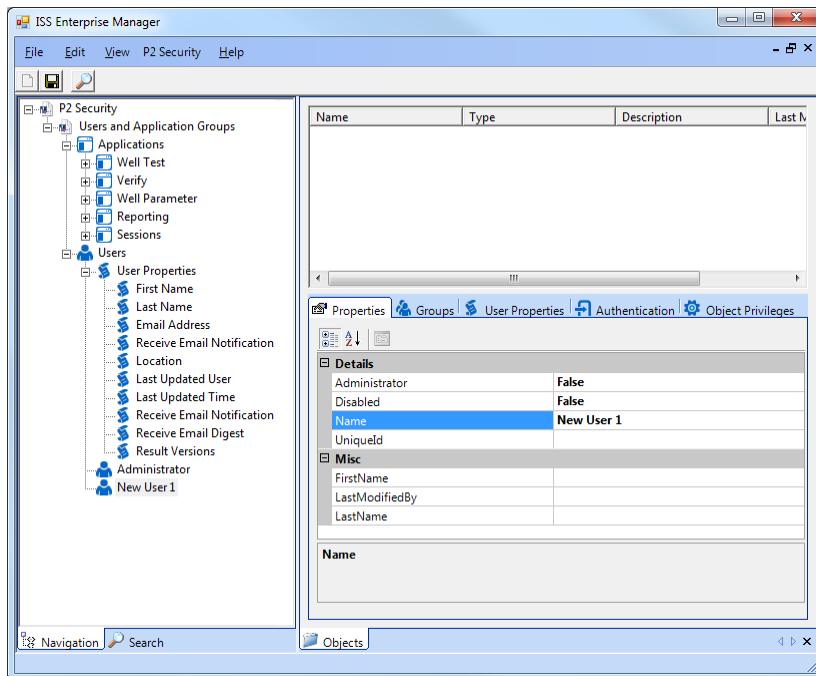
P2 Security Web UI - Group Maintenance Page

P2 Security Web UI is intended for super-users, the non-technical end-users who are responsible for user account administration. Super-users do not have to be familiar with the internal organisation of security within individual applications. The application does not give them control over all aspects of security configuration, but hides the complexity of its structure to make the configuration process easy to use.

P2 Security Plug-in

P2 Security comes with a plug-in for Enterprise Manager that exposes all the configurations of the security settings. P2 Security Plug-in, like all the plug-ins for Enterprise Manager, is a desktop user interface, and therefore it requires direct or remote access to the desktop of the system, where Enterprise Manager has been installed.

Administrators can use P2 Security Plug-in not only to manage users, but to define application objects, individual privileges and objects these privileges apply to, and to manage many other types of P2 Security definitions.



P2 Security Plug-in - Main Window

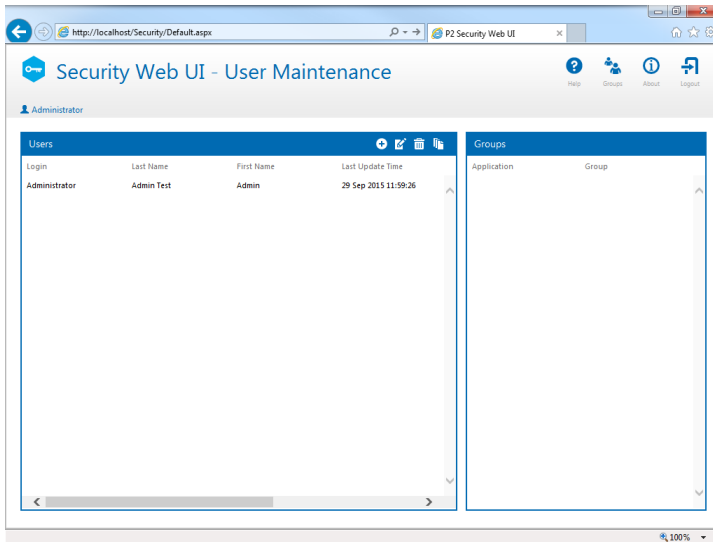
P2 Security Plug-in is a convenient tool for performing post-installation configuration of P2 Security for new applications in the system. To modify advanced settings, users should be familiar with the internal organisation of security within individual products. They must be aware of what predefined structures (object types, privileges, and so on) applications require in order to work properly. Such information can be found in the relevant Installation Guide documentation of individual products.

Note: Changes to security configuration made with P2 Security Plug-in by unqualified personnel can be harmful to the stability, security and performance of applications.

Overview of the Web UI

User Maintenance Page

The *User Maintenance Page* is the first page shown when the P2 Security Web UI is launched. It allows administrators to view the list of users, and to verify which user groups they belong to.



P2 Security Web UI - User Maintenance Page

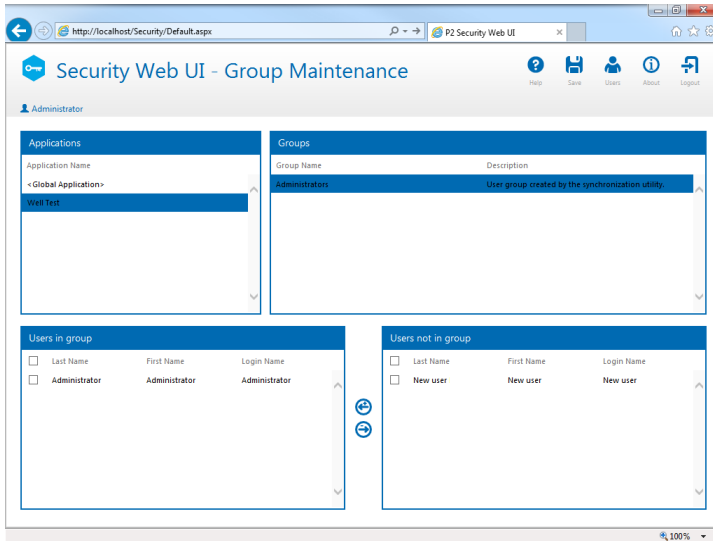
The page includes four icon buttons in the toolbar:

- *Help* - opens the Online Help documentation;
- *Groups* - opens the *Groups Maintenance Page* (see page 7);
- *About* - shows information about the application version (see page 9);
- *Logout* - logs out the current user (see page 13).

The page also lets administrators add (see page 9), edit (see page 10), copy, (see page 11) and delete (see page 11) security users. To use these functions, click the appropriate button in the header of the *Users* section on the left.

Group Maintenance Page

The Group Maintenance Page allows administrators to view the list of applications and their user groups, as well as to include or exclude users from these user groups.



P2 Security Web UI - Group Maintenance Page

The page includes five icon buttons in the toolbar:

- *Help* - opens the Online Help documentation;
- *Save* - saves the changes to the users' membership in the current group;
- *Users* - opens the *Users Maintenance Page* (see page 6);
- *About* - shows the information about the application version (see page 9);
- *Logout* - logs out the current user (see page 13).

The *Save* button becomes enabled only if there are any unsaved changes made to the users' membership in user groups.

Getting Started

Before you start using P2 Security Web UI you need to receive a **User Name** and **Password**. Typically, these will be the same as those used for your standard network login. Additionally, your P2 Security user account must be administrator in order for you to use the P2 Security Web UI.

Check with your System Administrator if you are unsure.

Logging On to the Web UI

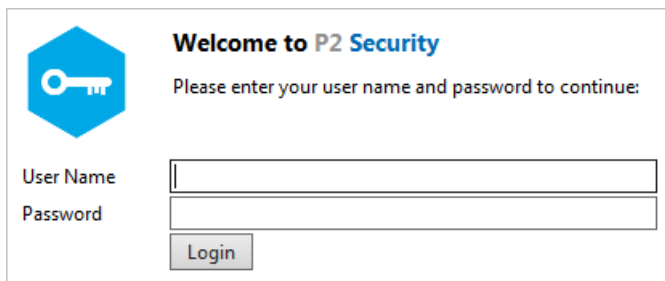
To access the P2 Security Web UI:

1. Navigate directly to the installed URL, which is typically in the following form:

[http://\[SERVER NAME\]/security/](http://[SERVER NAME]/security/)

The URL varies depending on the network organisation, configuration, and the location at which P2 Security Web UI is installed.

2. If you are not already authenticated as a user, a login page appears:



P2 Security Web UI - Login Page

- a. Enter a **User Name** and a **Password**.
 - b. Click **Login**.
3. When you are authenticated as a user, and if your account is marked as an administrator account in the P2 Security database, you will be redirected to the *User Maintenance Page* (see page 6).


If the logon is unsuccessful, an error message is displayed. You can attempt to log on again, or contact the system administrator to verify or change your logon credentials.

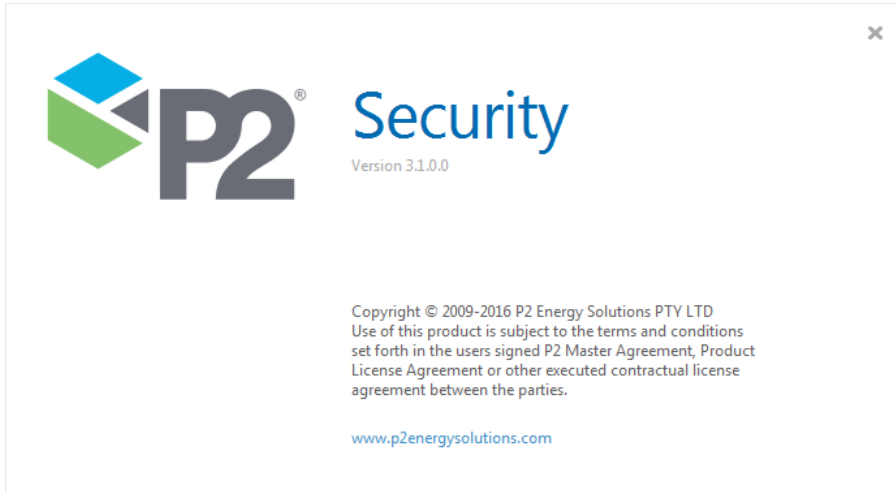
Changing Your Password

Your System Administrator controls all user names and passwords. If you need to change your password, contact your System Administrator.

Common Tasks

Checking Web UI Version

1. To check which version of P2 Security Web UI you are using, click the **About**  button on the toolbar. The *About* pop-up window appears.



About P2 Security Web UI Pop-Up Window

2. When you have finished viewing this information, click the close (X) button in the top right corner of the window.



Adding Users

To add a new security user, follow the steps presented below:

1. Open P2 Security Web UI and on the *User Maintenance Page* (see page 6), in the header of the *Users* section, click the *Add User*  button.


- The *User Details* dialog window for the new user account appears.

P2 Security Web UI - User Details Dialog Window

- In the upper section, *User Details*, fill in a login, a first and a last name, and choose whether the account should be an administrator account and whether it should be disabled or not. Select the authentication method; if the Password Authentication method has been selected, provide and confirm a password.
- In the central section, *User Properties*, fill in custom user properties (as defined in the P2 Security database). These properties can be defined using P2 Security Plug-in, and in the above example are the user's email address and age.
- Using the lower section, you can assign the user to various user groups by selecting the corresponding check-boxes and using the *Include*  and *Exclude*  buttons to move the user groups between the Groups Assigned and the Groups Unassigned lists.
- To save the changes, click the Save button at the lower right corner of the window or click the Save icon on the toolbar. To cancel the operation, click the Close button on the lower right, or close the window using the system toolbar.

Editing Users


To edit an existing security user, follow the steps presented below:

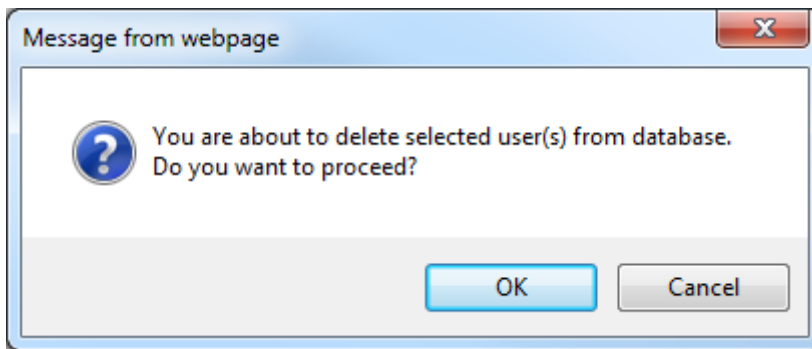
- Open P2 Security Web UI. On the *User Maintenance Page* (see page 6) select a user account from the *Users* section, and in the header of the section click the *Edit User*  button. The *User Details* dialog window for the edited user account appears.

2. Edit the required user settings and properties as shown in the Adding Users section (see page 9).
3. To save the changes, click the Save button at the lower right corner of the window or click the Save icon on the toolbar. To cancel the operation, click the Close button on the lower right, or close the window using the system toolbar.

Deleting Users

To delete an existing security user, follow the steps presented below:

1. Open P2 Security Web UI. On the *User Maintenance Page* (see page 6) select a user account from the *Users* section, and in the header of the section click the *Delete User*  button.
2. A confirmation dialog window appears.




P2 Security Web UI - User Delete Confirmation Dialog Window

3. To proceed click the OK button.

Note: The user account will be removed **immediately**. The operation cannot be undone.

Copying Users

To copy a security user (add a new security user based on an existing one), follow the steps presented below:




1. Open P2 Security Web UI. On the *User Maintenance Page* (see page 6) select a user account from the *Users* section, and in the header of the section click the *Copy User*  button. The *User Details* dialog window for the new user account appears. All of the user properties and user group memberships are configured as for the copied user account; the information in the *User Details* section at the top must be provided manually for the new user account.
2. Edit the required user settings and properties as shown in the Adding Users section (see page 9).
3. To save the changes, click the Save button at the lower right corner of the window or click the Save icon in the toolbar. To cancel the operation, click the Close button on the lower right, or close the window using the system toolbar.

Assigning Users to User Groups



For easier management, P2 Security Web UI supports two ways of managing users' group membership:

- Assigning a single user to user groups



Assigning users to a single user group To manage user group membership of a single user, perform the following steps:

1. Open P2 Security Web UI and on the *User Maintenance Page* (see page 6) in the header of the *Users* section, click the *Add User*  button, the *Edit User*  button, or the *Copy User*  button.


The *User Details* dialog window for the new or edited user account appears.

2. Using the lower section, you can assign the user to user groups by selecting their corresponding check-boxes and using the *Include*  and *Exclude*  buttons to move the user groups between the lists.
3. To save the changes, click the *Save* button at the lower right corner of the window or click the *Save* icon on the toolbar. To cancel the operation, click the *Close* button on the lower right, or close the window using the system toolbar.

To manage user group membership for a single user group, perform the following steps:

1. Open P2 Security Web UI and in the *Group Maintenance Page* (see page 7) in the upper left section, *Applications*, select the application whose user group you would like to manage.
2. In the upper right section, *Groups*, select the user group that you would like to manage.
3. Using the section at the bottom, you can assign users to the user group by selecting their corresponding check-boxes and using the *Include*  and *Exclude*  buttons to move the users between the lists.
4. To save the changes, click the *Save* button located in the header of the page.

Logging Out

-
- ▶ To log out, click the **Logout**  button at the top right corner of the screen. After logging out, you are redirected to the login page (see page 8).
-